

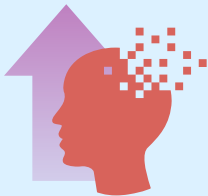
Rise in Medically Complex Patients

Three areas driving the greatest impact on treating the growing medically complex patient population

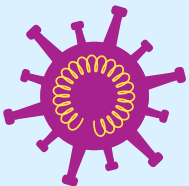
On the rise: Hospital-based rehabilitation programs are expecting a major influx of medically complex patients in the coming decades.



Stroke prevalence is expected to **rise 21%** by 2030



More than **1.2 million** citizens are projected to have **Parkinson's disease** by 2030



COVID-19 long-haulers are expected to face additional medical complexities and disabilities



**Lifepoint
Rehabilitation**

For more information, visit www.lifepointrehabilitation.net

1 Getting Your Staff Prepared Clinically

Many rehabilitation programs try to serve the new medically complex patient population with **outdated staffing models which can lead to operational inefficiencies and subpar outcomes.**

Critical positions for treating medically complex patients are:



Rehab-experienced nurses



Speech-language pathologists



Clinical liaisons and certifications



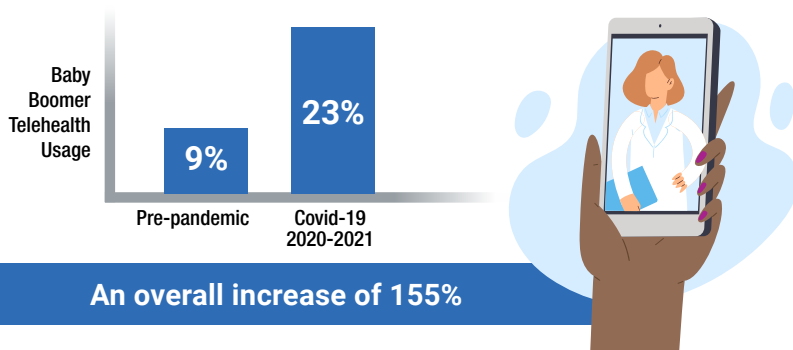
Infection control specialists



Behavioral health experts

2 Adapting Through Tech Innovation

The usage of **telehealth technology** has rapidly increased since the beginning of COVID-19, with baby boomers accounting for the greatest portion of new users.



3 Enhancing Patient and Family Member Experience

Working follow-up calls into discharge procedure can produce optimal outcomes for both patients and rehab programs.



Initiatives to support the adult child caregiver